

10 Year Roadmap

- ▶ Responding to water issues faced by Europe and globally
- ▶ Aimed primarily at policymakers and funding organisations

KEY WATER CHALLENGES

- Water crises** are one of the most **important risks** to the economy and society in the coming years
- By 2025, **two thirds** of the global population could be facing **water stress**
- Global water requirements are projected to push **beyond sustainable water supplies by 40% by 2030**, with **global use doubling by 2060**
- Around **80% of wastewater** is discharged untreated
- Agricultural use accounts for 70% of water use** worldwide
- Energy production** will lead to an **85% increase** in water demands by 2035

Sources: World Economic Forum, the Global Risks Report 2020; UN Water, SDG 6 Interlinkages

ADDRESSING THESE CHALLENGES THROUGH THE WATER JPI'S...

Shared Vision...
Together for a water-secure world

&

Shared Mission...
Jointly enabling 'smart' water solutions for a changing world

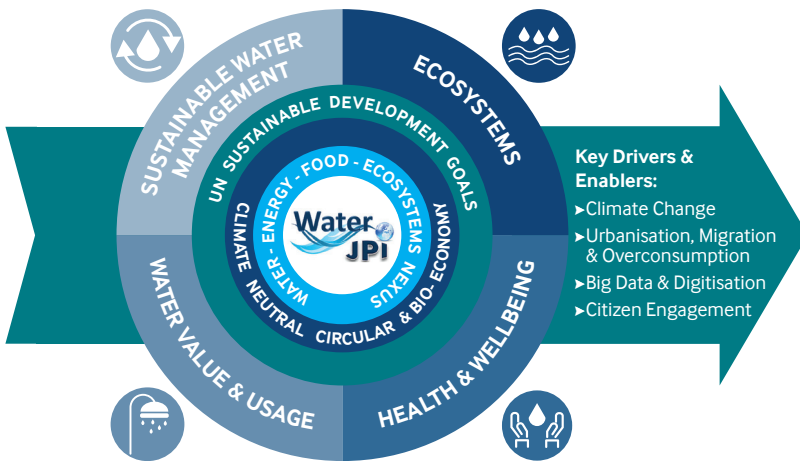


WATER RESEARCH & INNOVATION

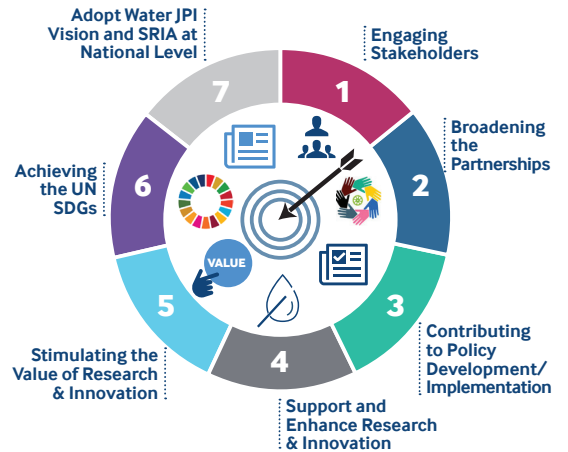
The key water challenges facing society:

- ▶ Deteriorating water quality and quantity
- ▶ Sustainable use and management of water resources
- ▶ Coordinated effort need to tackle these issues through research and innovation

CORE RESEARCH THEMES & CROSS-CUTTING ISSUES



WATER JPI OBJECTIVES



WATER JPI IMPLEMENTATION

10-Year Duration	VISION 2030 <ul style="list-style-type: none"> ▶ High level document ▶ Key water challenges and research areas
Revised on a 5-Year Basis	STRATEGIC RESEARCH AND INNOVATION AGENDA 2025 <ul style="list-style-type: none"> ▶ Core research themes ▶ Provides key research priorities
Every 3 Years	JOINT IMPLEMENTATION PLANS <ul style="list-style-type: none"> ▶ Work programme defining the Water JPI actions to address key research priorities
Joint Actions	<ul style="list-style-type: none"> ▶ Research & Innovation calls ▶ Knowledge hubs ▶ Alignment of national programmes etc.