

Common Vision between the Water & FACCE JPIs

2019 Water JPI Experts Workshop
Drafting the new Water JPI Strategic Research
& Innovation Agenda (SRIA 2025)
October 22-23, 2019



Joint Programming
Initiative on
Agriculture, Food Security
and Climate
Change

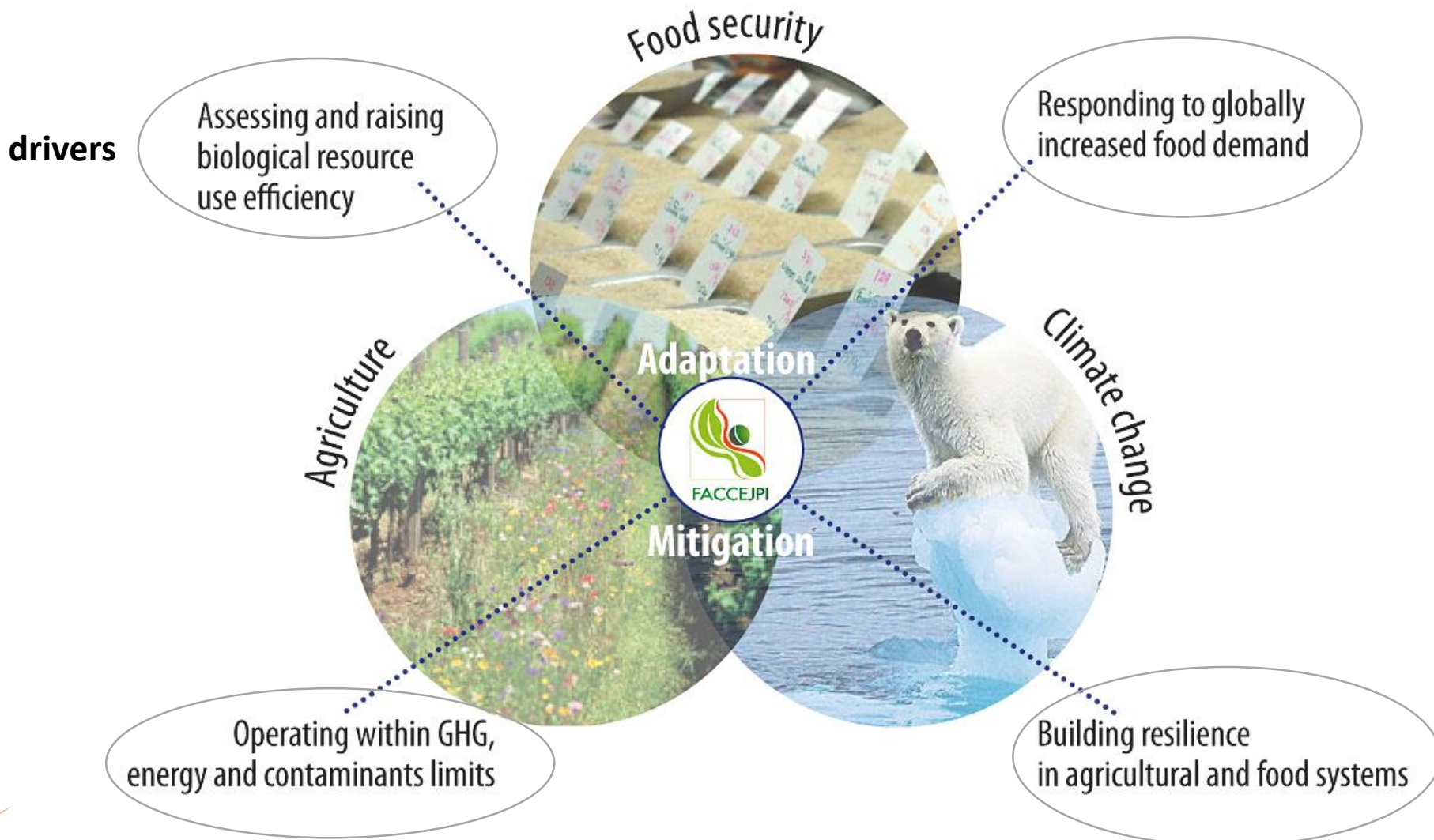
Heather McKhann
Coordinator, FACCE-JPI Secretariat

FACCE-JPI

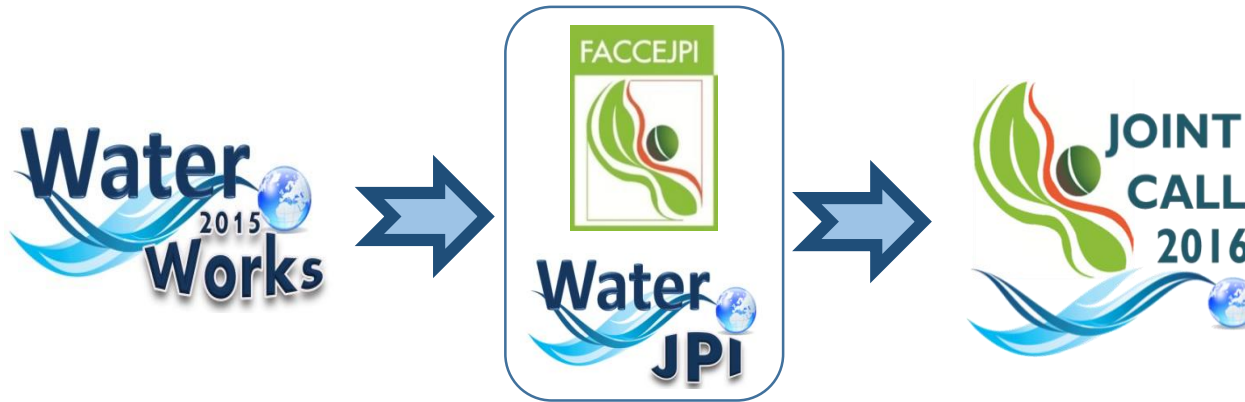
- Established in 2010
- 23 European and Associated countries as well as New Zealand, European Commission and SCAR as observers
- Strategic Research Agenda: focusing on the intersection between **agriculture, food security and climate change**
 - Focus: integration and alignment of national research resources in Europe under a common research strategy, to address the diverse challenges
- 12 research actions under successive Implementation Plans with new investment of over 120M€ (11 calls (4 ERA-NETs), 2 knowledge hubs)
- 1 EJP, 1 ERA-NET and 1 Science-Policy hub in preparation...
- More information: www.faccejpi.net



FACCE-JPI



Water and FACCE: A long history



Sustainable management of water resources in agriculture, forestry and freshwater aquaculture sectors

- Increasing the efficiency and resilience of water uses
- Monitoring and reducing soil and water pollution
- Integrating social and economic dimensions into the sustainable management and governance of water resources

Common vision of the two JPIs.



- ...There is a defined **connection** between the water resources and food production → there is the need to think broader on the trans-disciplinarity of common interests
- ...Required for achieving the UN Sustainable Development Goals
- ...Water and food security are linked and even more due to the impact of climate change
- There is a need to work at different scales (from local to global and vice-versa), considering measurements/observations and modelling for assessing the future risks.
- Both JPIs seek to seize the opportunities provided by big data and research infrastructures.



First Workshop – Bonn, July 2018 Final recommendations

- The Water and FACCE JPIs have **similar structures** with a significant focus on European cooperation and working with third parties
- Reaching out **internationally** is also highlighted as important for both
- Working together may yield a stronger **approach and input** from the JPIs at the European Commission (EC) programme committee level
- Together it may be possible to have a **greater influence** on the competitive calls within the EC

First Workshop – Bonn, July 2018

Identified knowledge gaps

- **Aquaculture research:** The approach to food production in aquaculture is similar efficiency-wise to agriculture. The collaboration between the Water and FACCE JPIs provides an opportunity to identify these links and explore this further.
- **Linkage** of water and agriculture researchers must be more in focus
- **Soil pollution:**
 - Not explicitly mentioned in either strategic agenda
 - Heavily impacted by pollutants infiltrating through soil layers
- **Bio-economy**
- **Forestry**
- **Water footprint** of products
- **Multi-scale modelling** to see the impact of changes at different scales

Key objectives of the September 2019 Paris Workshop

- Strengthen the linkages between Water and FACCE JPIs
- Identify gaps and synergies between the Water JPI SRIA and FACCE JPI SRA
- Opportunity to investigate the continuity of joint actions (i.e. possible implementation tools) between both JPIs after the completion of the ERA-NET Co-fund **WaterWorks2015**.



Key conclusions of the September 2019 Paris Workshop

Common Scientific gaps/ interests

- WEF E Nexus: Water, Energy, Food, Ecosystems/Land
- Agro-ecology
- Circular economy: link between water and agriculture
- Circular agriculture, including water management
- Impacts on Health: human, animals, plants
- Soil capacities (pollutants, filtering...)

Key conclusions of the September 2019 Paris Workshop

Cross-cutting

- Increase IMPACT of SRIA/SRA through:
 - Strengthening the role of Social Sciences
 - Improved communication to end users
 - Workshops to bring scientists & policy makers together
 - Impact on SDGs (indicators)
- Global perspective
- Socio-economic approach to be highlighted
- Focus on policy impact for example through Policy Briefs :
 - Adapting message and means of communication to the target
 - Fitting into the timeline of the political agenda
 - Steady and continuous approach (repeated actions)
- Improved Communication and Dissemination

Key conclusions of the September 2019 Paris Workshop

Instruments

- Joint fora for science-policy dialogue
- Knowledge Hub(s)
- Research infrastructures
- Exchanges at governance level (e.g. SAB, GB)



Thank you for
your attention!



FACCEJPI

Joint Programming
Initiative on
Agriculture, Food Security
and Climate
Change



Facce-Secretariat@inra.fr



www.faccejpi.com



@faccejpi