







Water NEEDs, Availability, Quality and Sustainability

WE-NEED



Monica Riva
Brian Berkowitz
Susana Loureiro
Daniel Fernandez-Garcia

CONSORTIUM DESCRIPTION

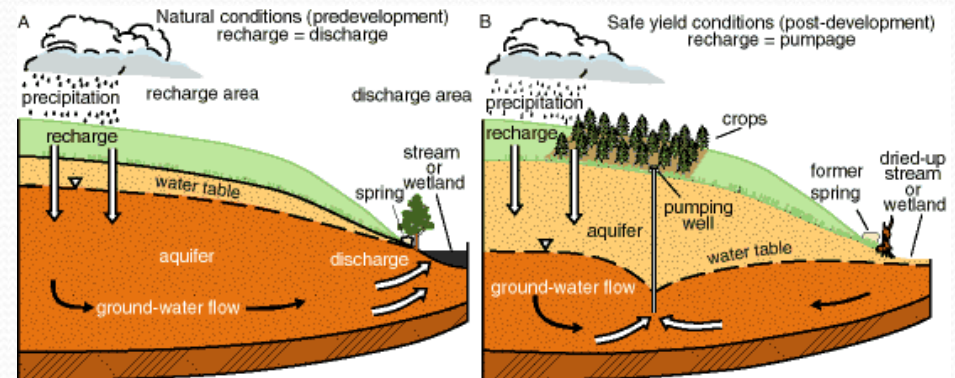
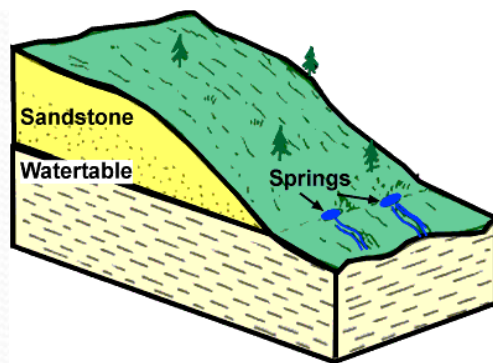
ACRONYM	TOPIC	Coordination	Partners
WE-NEED	2		  
Water Needs, Availability, Quality and Sustainability		water management; risk assessment; emerging contaminants; surface and groundwater interaction; multiscale characterization; ecotoxicity	

PRINCIPAL INVESTIGATOR	INSTITUTION		COUNTRY
Monica Riva	Politecnico di Milano	- Polimi	Italy
Brian Berkowitz	Weizmann Institute of Science	- Weizmann	Israel
Susana Loureiro	Universidade de Aveiro	- UAVR	Portugal
Daniel Fernandez-Garcia	Universitat Politecnica de Catalunya	- UPC	Spain

WE-NEED

Scope and State of the art

GOAL: Develop **innovative** management strategies to assist the use/protection of groundwater resources (**springs** – **wells**)



<http://imnh.isu.edu/digitalatlas/hydr/concepts/gwater/gwfr.htm>

http://www.kgs.ku.edu/Publications/pic9/pic9_2.html

WE-NEED

Scope and State of the art

GOAL: Develop **innovative** management strategies to assist the use/protection of groundwater resources (**springs – wells**)

Problems/Failure of classical approaches/Challenges of WE-NEED:

- **Heterogeneity** of natural systems. Strategy: proper quantification
- **Complex dynamics** of processes involved. Strategy: process quantification for modeling and decision-making
- **Scaling/Statistical Scaling:** Transfer knowledge across scales. How to use available information from a range of observational scales to characterize/describe the subsurface at a desired scale (in space and time)? Strategy: increase certainty of predictions

WE-NEED

Scope and State of the art

GOAL: Develop **innovative** management strategies to assist the use/protection of groundwater resources (**springs** – **wells**)

WATER QUANTITY : Over-exploitation of groundwater resources

WATER QUALITY : Regulated and emerging contaminants
(pharmaceuticals, ...)

KEYWORDS: Management/Protection of Groundwater Resources –
Sustainability – Uncertainty Quantification - Risk Assessment -
Multiscale Statistical Analysis
Relevant **Study Cases** (real scenarios)

Objectives and relation to the scope of the call

Scientific/Application-oriented objectives are:

- Develop methods/models to include **uncertainty quantification** and its **propagation across scales** (as grounded on direct observations/experiments at diverse scales of interest) **in risk assessment** (under uncertainty).
- Provide quantitative understanding and **process-based models** of the hydrogeological system and geochemical behavior of reactive chemical species **in relevant scenarios**.
- Include these results within a **decision making** framework for the **sustainable use of water**, preserving historical heritage, and with acceptable risk to existing ecosystems.
- Assessment of the contaminant-specific **vulnerability** of the aquifer systems.
- Physically-based **risk assessment** and water management protocols.

Objectives and relation to the scope of the call

Scientific/**Application-oriented** objectives are:

- Develop methods/models to include **uncertainty quantification** and its **propagation across scales** (as grounded on direct observations/experiments at diverse scales of interest) in risk assessment under uncertainty.
- Provide quantitative understanding and **process-based models** of the hydrogeological system and geochemical behavior of reactive chemical species **in relevant scenarios**.
- Include these results within a **decision making** framework for the **sustainable use of water**, preserving historical heritage, and with acceptable risk to existing ecosystems.
- Assess the **contaminant-specific vulnerability** of the aquifer systems.
- Provide physically-based **risk assessment** and water management protocols.

Objectives and relation to the scope of the call

Topic 2 of the WaterWorks 2014 Cofunded Call: "Research and innovation for developing technological solutions and services **for Water Resources Management**". Within this topic *WE-NEED* deals with **(subtopics 2.3 and 2.4) "uncertainty/risk assessment, relevant study cases and innovative decision making tools"**.

WE-NEED

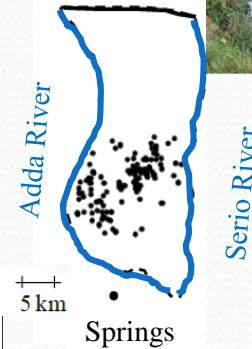
Objectives and relation to the scope of the call

Topic 2 of the WaterWorks 2014 Cofunded Call: "Research and innovation for developing technological solutions and services for **Water Resources Management**". Within this topic *WE-NEED* deals with (subtopics 2.3 and 2.4) "uncertainty/risk assessment, **relevant study cases and innovative decision making tools**".

Two field sites representing different but complementary realities.



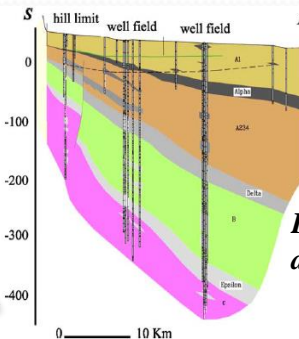
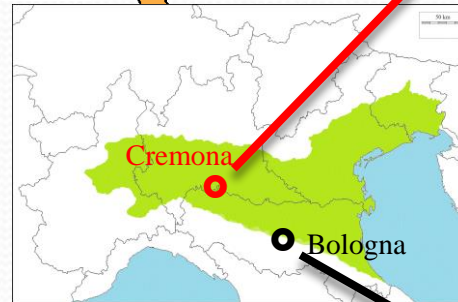
Springs location in the Cremona-Bergamo area



The *Cremona Aquifer* located in the so-called *Springs Belt*.

Natural high-quality water springs are the main supply to agriculture and a key environmental driver.

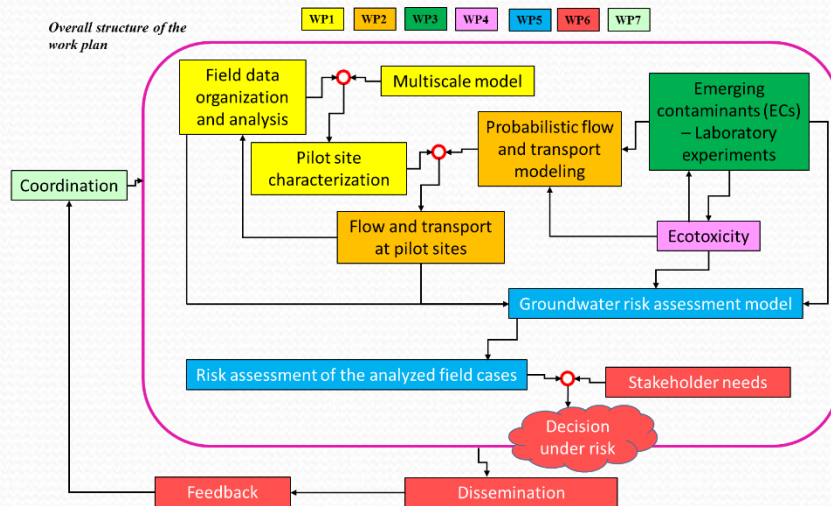
The *Bologna Aquifer* is a key source of water for the metropolitan area of Bologna.



Bologna aquifer system

WE-NEED

Work Package (WP) description / distribution of tasks



		Lead Partner	Participating Partner
WP1	Data collection and multiscale characterization	Polimi	UPC, UAVR, Weizmann
WP2	Probabilistic flow and transport modeling	UPC	Polimi, Weizmann
WP3	Fate of Emerging Eontaminats (Ecs) - laboratory experiments and modeling	Weizmann	UAVR
WP4	Ecotoxicology	UAVR	Weizmann
WP5	Multidisciplinary risk assesment and decision making	Polimi	UPC, UAVR, Weizmann
WP6	Dissemination of results, communication with stakeholders/general public	Polimi	UPC, UAVR, Weizmann
WP7	Project management	Polimi	UPC, UAVR, Weizmann

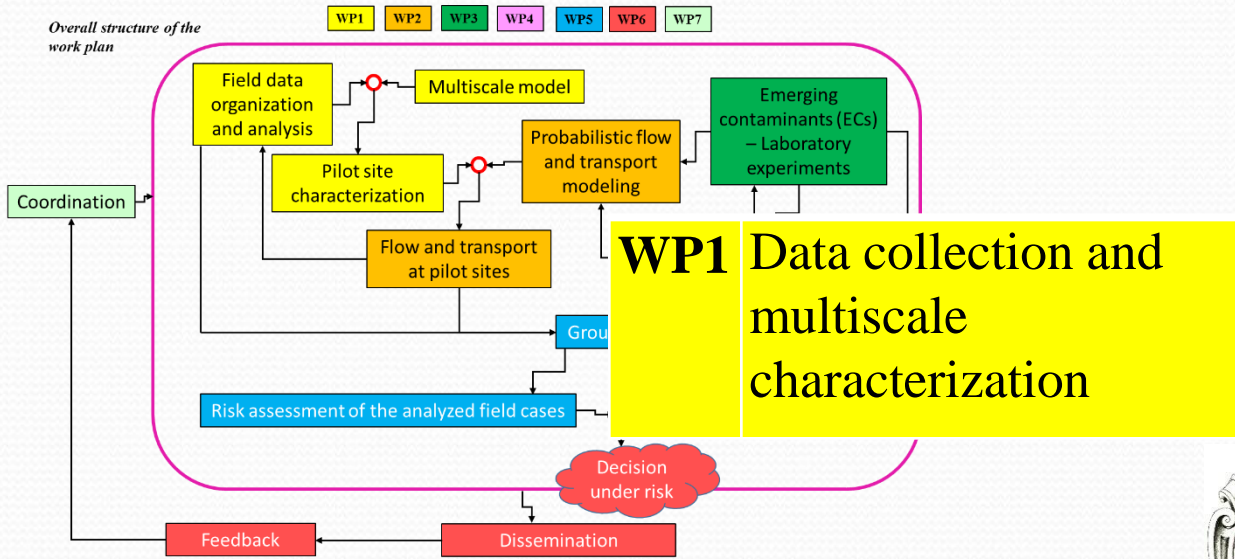
All partners participate in several WPs

- Shared international experience, state-of-the-art process understanding and modeling techniques
- Mobility of researchers
- Multidisciplinary work

WE-NEED

Work Package (WP) description / distribution of tasks

Overall structure of the work plan



		Lead Partner	Participating Partner
WP1	Data collection and multiscale characterization	Polimi	UPC, UAVR, Weizmann
WP2	Probabilistic flow and transport modeling	UPC	Polimi, Weizmann
WP3	Fate of ECs - laboratory experiments and modeling	Weizmann	UAVR

WP1 Data collection and multiscale characterization

Polimi

UPC, UAVR, Weizmann

- Develop a new model for scaling of statistics.
- Develop conceptual models of pilot sites.
- Reconstruction of spatial distributions of hydrogeological parameters.

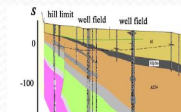


Consorzio di Bonifica Dugali, Naviglio, Adda Serio



CONSORZIO IRRIGAZIONI CREMONESI
(ANITA consorzio)
www.consorziourrigazioni.it

Water derivation and distribution for irrigation



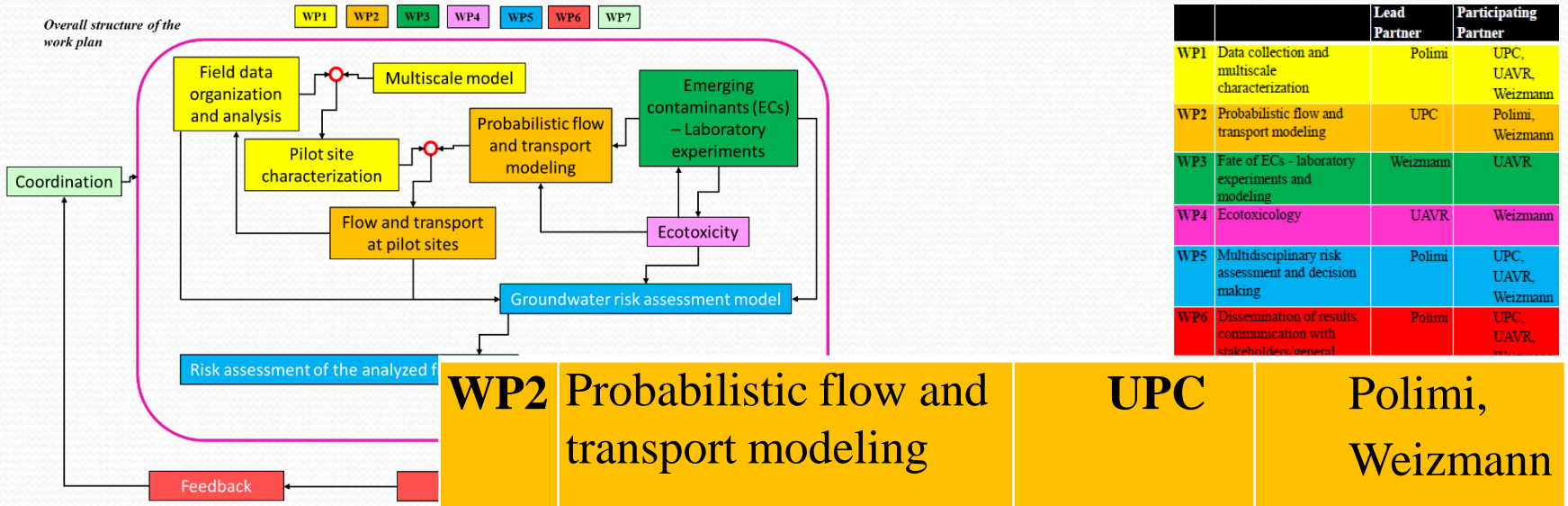
0 10 Km

arpae
agenzia prevenzione ambiente energia emilia-romagna

Regional Agency for Environmental Protection

WE-NEED

Work Package (WP) description / distribution of tasks

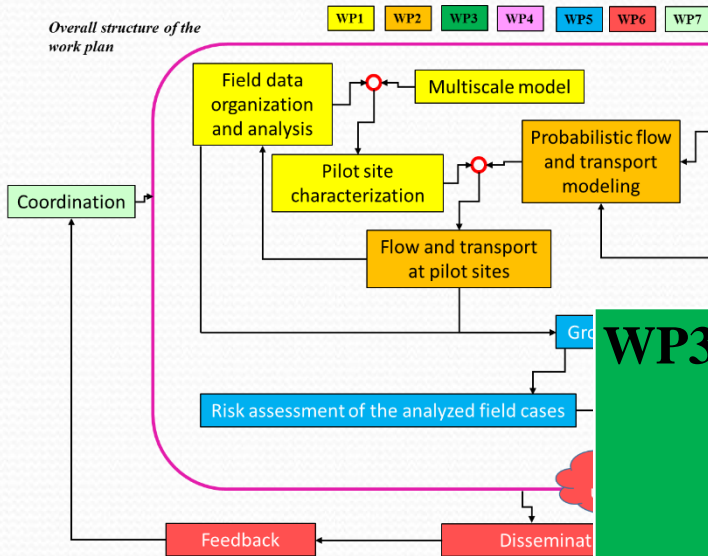


- Develop methods for complex reactive transport problems.
- Reconstruct groundwater circulation within the field cases.
- Assess probabilistic time-related protection zones.

WE-NEED

Work Package (WP) description / distribution of tasks

Overall structure of the work plan



		Lead Partner	Participating Partner
WP1	Data collection and multiscale characterization	Polimi	UPC, UAVR, Weizmann
WP2	Probabilistic flow and transport modeling	UPC	Polimi, Weizmann
WP3	Fate of ECs - laboratory experiments and modeling	Weizmann	UAVR
WP4	Ecotoxicology	UAVR	Weizmann
WP5	Multidisciplinary risk assessment and decision	Polimi	UPC, UAVR

WP3 Fate of Emerging Contaminants (ECs) - laboratory experiments and modeling

Weizmann

UAVR

WP4 Ecotoxicology

UAVR

Weizmann

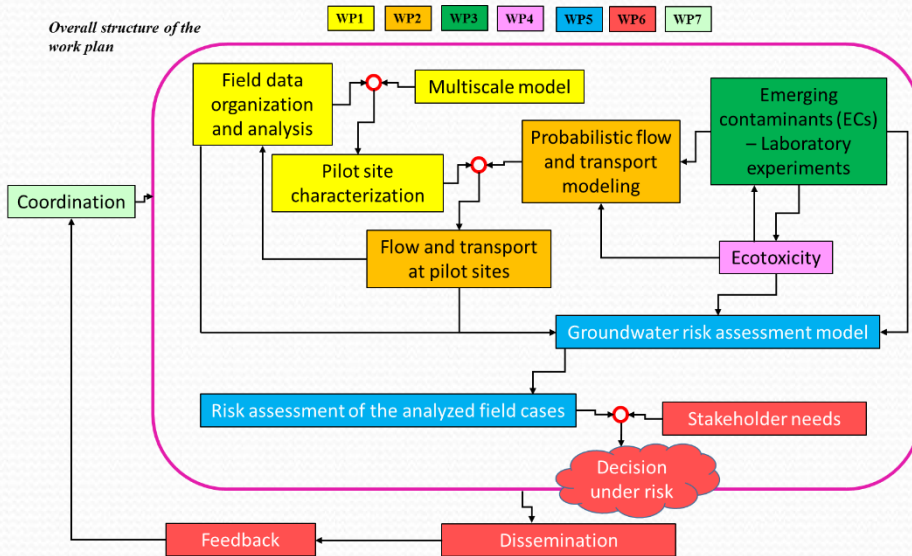
- Examine the transport behavior of representative ECs (laboratory experiments).
- Examine ECs transformation in environmentally-relevant conditions.
- Model fate and transport of ECs.

- Assess toxicity of groundwater samples.
- Infer potential increases in toxicity (synergism) due to multiple chemical exposure.

WE-NEED

Work Package (WP) description / distribution of tasks

Overall structure of the work plan



		Lead Partner	Participating Partner
WP1	Data collection and multiscale characterization	Polimi	UPC, UAVR, Weizmann
WP2	Probabilistic flow and transport modeling	UPC	Polimi, Weizmann
WP3	Fate of ECs - laboratory experiments and modeling	Weizmann	UAVR
WP4	Ecotoxicology	UAVR	Weizmann
WP5	Multidisciplinary risk assessment and decision making	Polimi	UPC, UAVR, Weizmann
WP6	Dissemination of results, communication with stakeholders/general public	Polimi	UPC, UAVR, Weizmann
WP7	Project management	Polimi	

WP5 Multidisciplinary risk assessment and decision making

WP6 Dissemination of results, communication with stakeholders/general public

Polimi

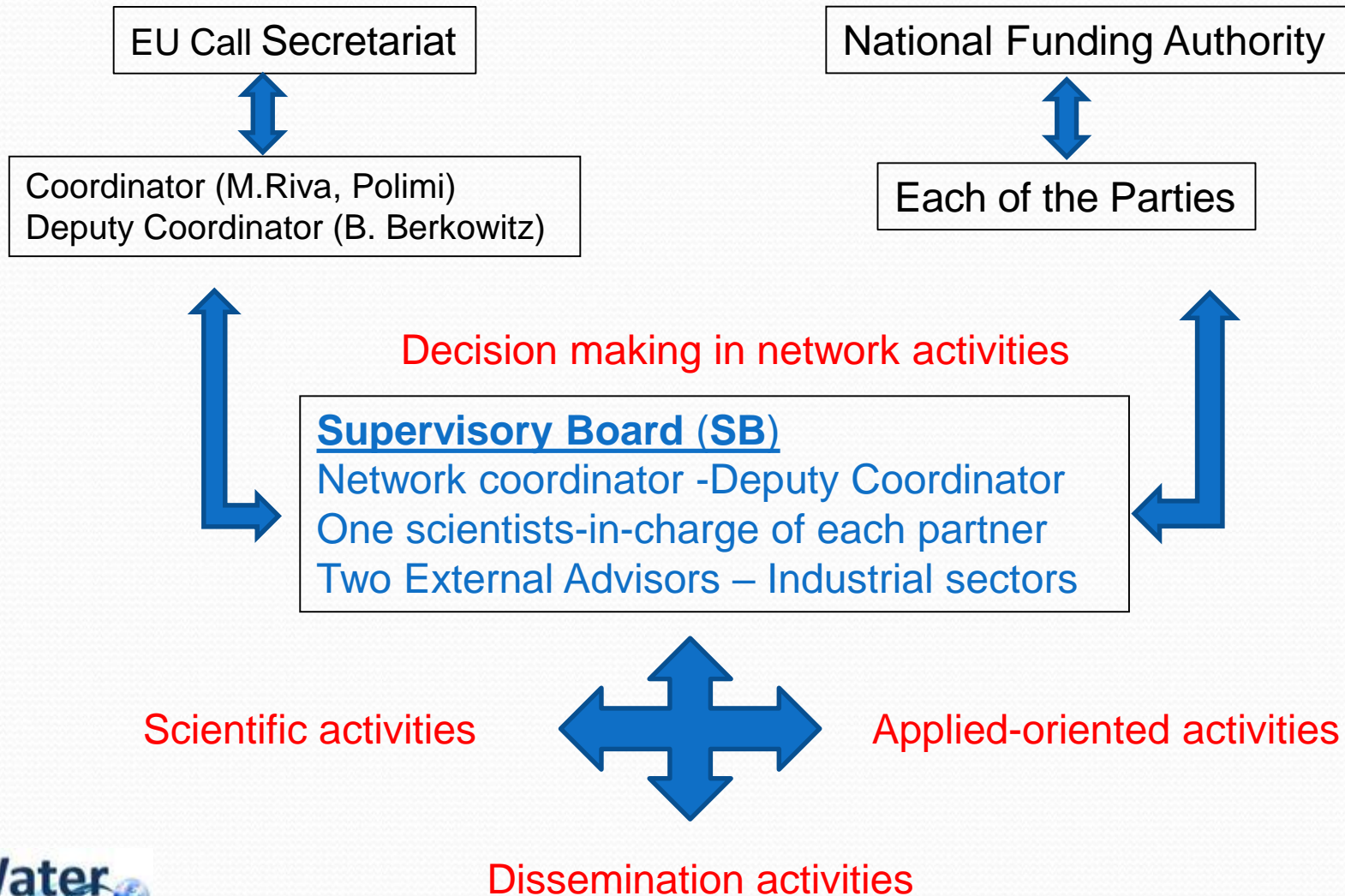
UPC, UAVR, Weizmann

- Develop a Groundwater Risk Management Model.
- Apply the Risk Model to the field sites.

Convey the scientific information in clear form to stakeholders, general public.

WE-NEED

Management structure



Innovative Aspects

Statistical Scaling. To describe aquifer functioning under the influence of uncertain parameters and processes defined at diverse scales.

Characterization of the **fate of ECs in aquifers.**

Quantification of the effect of **multiple sources of uncertainty** on sustainable management and protection of the groundwater resources.

Expected Impact

Increased levels of confidence by **reducing uncertainties.**

Impacts of groundwater extractions and contaminant dynamics.

Reduce future costs associated with over-exploitation/contamination of groundwater.

Innovative Aspects

Application of **probabilistic groundwater models in real/relevant hydrogeological studies**
(Probabilistic Risk Assessment)

Expected Impact

Provision of an understandable and **ready-to-use platform for risk analysis and management under uncertainty**

WE-NEED

Thank you



**POLITECNICO
MILANO 1863**

**WEIZMANN
INSTITUTE
OF SCIENCE**



WE-NEED



WatEr NEEDs, Availability, Quality and Sustainability



cbio departamento de biologia
1976. 2016 a formar cidadãos biólogos.

Hydrogeology
Group



idæ^a



Consorzio di Bonifica Dugali,
Naviglio, Adda Serio



CONSORZIO IRRIGAZIONI CREMONESI
(ente consorzio)
www.conorzioirrigazioni.it



arpae
agenzia
prevenzione
ambiente energia
emilia-romagna